

SYMBOL DEFINITIONS



Please read the instructions for use prior to operating the machine for the first time.



Mandatory



Indication



Prohibition



Warning Triangle



Wear Eye Protection



Wear Head Protection



Wear Breathing Protection



The Use Of Ear Protection Is Mandatory



Wear a Hard Hat



Wear Safety Shoes



Wear Appropriate Clothing



Remove The Blade Prior To Hoisting, Loading, Unloading And Transporting The Machine On Jobsite



Motor Off



Machinery Hazard, Keep Hands And Feet Clear



No Non-working Personnel In Area



Do Not Operate Without All Guards In Place



Always Keep the Blade Guards In Place



Water Supply On



Water Supply Off



Water Supply



Keep Work Area Clean/Well Lit, Remove All Safety Hazards



Dangerously High Noise Level



Pay Extreme Attention To The Care And Protection Have The Machine Before Starting Up



Remove Tools From Area and Machine



Oil Pressure



Lubrication Point



Repairs Are To Be Done By An Authorized Dealer Only



Diamond Blade



Blade Diameter



Pulley Diameter



Number of Revolutions Per Minute, Rotational Speed



Blade Flange Diameter



Machine Mass (lbs)

WARNING

HEARING HAZARD

DURING NORMAL USE OF THIS MACHINE, OPERATOR MAY BE EXPOSED TO A NOISE LEVEL EQUAL OR SUPERIOR TO **85 dB (A)**.

SAFETY

Read and follow all instructions of safety, operating and maintenance. Failure to follow these instructions may result in personal injury or death, equipment damage or reduce equipment life.

SAFETY MESSAGES:

Safety messages inform the user about potential hazards that may lead to injury, death or equipment damage. Use the following words to identify the severity to the message.

e.g. Warning: not following instructions WILL LEAD to DEATH or SERIOUS INJURY.

DAMAGE PREVENTION MESSAGES:

Each Damage Prevention Message is to provide important instructions; damage of equipment or other properties may occur if manuals are not followed. The word 'NOTE' will be used before each message.

e.g. NOTE: Equipment or other properties may be DAMAGED if these instructions are not FOLLOWED.

GENERAL SAFETY PRECAUTIONS & HAZARD SYMBOLS:

In order to prevent injury, the following safety precautions and symbols should be followed at all times!

SAFETY PRECAUTIONS

KEEP GUARDS IN PLACE.

In order to prevent injury, keep guards in place and in working order at all times.

REMOVE ADJUSTABLE KEYS AND WRENCHES.

Form a habit of checking that keys and adjustable wrenches are removed from the machine before it is turned on.

KEEP WORK AREA CLEAN.

Cluttered work areas and benches invite accidents.

DO NOT USE IN DANGEROUS ENVIRONMENTS.

Do not use machine in damp or wet locations nor expose them to rain. Always keep the work area well lighted.

KEEP CHILDREN AWAY.

All visitors and children should be kept a safe distance from work area.

MAKE THE WORKSHOP KIDPROOF.

Make the workshop childproof by using padlocks, master switches or removable starter keys.

DO NOT FORCE THE MACHINE.

The machine will do a better and safer job if it is operated at the correct RPM loads during operation at the rate for which it was designed.

USE THE RIGHT TOOL.

Do not use a tool or an attachment to do a job for which it was not designed.

USE THE PROPER EXTENSION CORD.

If using an extension cord, please make sure it is in a good condition first. When using an extension cord, be sure to use one with the correct gauge to carry the electric current for the machine's draw. An undersized cord will cause a drop in line voltage that will result in a loss of power and overheating. Good motor performance depends on proper voltage. Extension cords that are too long or too small may reduce the voltage to a motor under load. Use extension cords **NO SMALLER** than the size indicated in the table shown. If in doubt, use the next heavier gauge. The following table shows the correct size to use depending on cord length and motor ampere rating.

EXTENSION CORD SIZE (MINIMUM)						
MOTOR (HP)	50 ft		75 ft		100 ft	
	115V	230V	115V	230V	115V	230V
1-1/2 HP	# 10	# 14	# 10	# 14	# 10	# 14
2 HP	# 10	# 12	# 10	# 12	# 10	# 12
3 HP	—	# 10	—	# 10	—	# 10



WARNING: *DO NOT operate on low voltage! Low voltage causes loss of power, motor overheating and possibly motor winding burnout. Voltage should be checked at the motor while it is operating.*

WEAR PROPER APPAREL.

Do not wear loose clothes, neckties, rings, bracelet, or other jewelry that may be caught in moving parts. Non-slip footwear is recommended. Wear protective hair covering to warp long hair.

ALWAYS USE SAFETY GLASSES.

Safety glasses should always be worn when working around machine. In addition, dust mask or respirator should be worn if the cutting operation is dusty. Everyday glasses only have impact resistant lenses and may not prevent eyes injury, so they are NOT safety glasses.

SECURE WORK.

Clamps or a vise should be used to hold workpiece whenever practical. Keeping your hands free to operate machine is safer.

DO NOT OVERREACH.

Keep proper footing and balance at all times by not overreaching.

MAINTAIN TOOLS WITH CARE.

Keep machine clean for the best and safest performance. Always follow maintenance instructions for lubricating, and when changing accessories.

DISCONNECT MACHINE.

Machine should always be disconnected before servicing or changing accessories, such as blades, bits, cutters, and so on.

REDUCE THE RISK OF UNINTENTIONAL STARTING.

Make sure the ON/OFF switch is in the 'OFF' position before plugging in.

USE RECOMMENDED ACCESSORIES.

Consult the Owner's Manual for recommended accessories. Using improper accessories may increase the risk of personal injury.

NEVER STAND ON THE MACHINE.

Serious injury may occur if the machine is tipped, or if the cutting blade is unintentionally contacted.

CHECK DAMAGED PARTS.

Before using the machine, check for damaged parts. A guard or any other part that is damaged should be carefully checked to determine if it would operate properly and perform its intended functions. Always check movable parts for proper alignment or binding. Check broken parts, mountings and any conditions that may affect the operation of the machine. A guard or any damaged part should be properly repaired or replaced.

FEED DIRECTION.

Always feed workpiece into a blade or cutter against the direction of rotation. A blade or cutter should always be installed in the same direction as the rotation arrow imprinted on the side of it.

NEVER LEAVE MACHINE RUNNING UNATTENDED – TURN POWER OFF.

Do not leave until the machine stopped completely. Always turn the machine OFF when leaving the work area, or when the cutting is finished.

ALWAYS REMAINS' ALERT WHEN THE MACHINE IS IN USE.

The operator's inattention may lead to serious injury.

DO NOT FORCE THE MATERIAL BEING CUT.

Always let the blade cut at its own speed.

DO NOT ALTER THE PLUG OR USE A 2-PRONG RECEPTACLE.

This machine is equipped with 3-prong electrical plug.

MAKE SURE YOU USE THE CORRECT BLADE FOR THE JOB YOU ARE DOING.

Do not use 'WET' blade without water.

CHECK DIAMOND BLADES CAREFULLY.

Check for cracks, nicks, missing diamond matrix or not of alignment condition. Replace damaged blades immediately. Do not use damaged blades. They may cause body injury.

Hazard Symbols

ELECTRICAL SHOCK!

Never touch electrical wires or components while the motor is running. Exposed, frayed or worn electrical motor wiring may cause electrical shock that may lead to severe injury or burns.

ACCIDENTAL STARTING-UP!

Before plugging in, make sure the ON/OFF switch is in the 'OFF' position to prevent accidental starting-up. Unplug the machine before performing any service operation.

ROTATING OR MOVING PARTS!

Keep hands, feet, hair, and clothes away from the moving parts to prevent injury. Never operate a power tool with covers or guards removed.



WARNING: *The process of sawing and drilling will generate dust and the excessive airborne particles may cause irritation to eyes, skin and respiratory tract. To avoid the harm of respiratory track, metal dust must be controlled and protection measure must be used.*



WARNING: HEARING HAZARD

During normal use of this machine, operator may be exposed to a noise level equal or superior to 85db.

PREOPERATIONL CHECKLIST



Every machine is thoroughly tested before leaving factory. Follow our instructions strictly and your machine will give you long life in normal operating conditions.



Before starting up the machine, make sure that you have read the Owner's Manual and are familiar with its operation.

1 - 2 HOUR OPERATION CHECK LIST:



ALWAYS place the machine surface with the motor "OFF", and disconnected from the power source before performing any maintenance. Let the machine cool down!!

1. Tension the blade drive V-belts. DO NOT over tension!!

SCHEDULED MAINTENANCE QUICK REFERENCE:



Before performing any maintenance, **ALWAYS** place the machine on a level surface with the motor "OFF".

SERVICE DAILY:

1. Check blade guard for damage.
2. Check hoses and clamps for damage or looseness. Tighten or replace as necessary.
3. Check the water pump cleaner. Clean or replace as required.
4. Clean the reservoir pan frequently.
5. At the end of each day, flush clean water through the water pump and hoses

SERVICE EVERY 50 HOURS:

1. Check blade drive V-belt tension, DO NOT over tension!!!



MANDATORY



INDICATION INFORMATION INSTRUCTION



WARNING



PROHIBITION

These signs will give advice for your safety



Before leaving our factory every machine is thoroughly tested.

Follow our instructions strictly and your machine will give you long service in normal operating conditions.

1 Feature

Use: Wet or Dry sawing of Masonry and Refractory Materials

Cutting Tools:

Diamond blades—dry or wet cutting, Φ 12" (300 mm), Φ 14" (350 mm), Φ 16" (406 mm) with Arbor Φ 1" (25.4 mm)

(For more information contact your dealer)

Depth of Cuting(Maximum):

5.00" (127 mm) with Φ 14" (356 mm) blade

Maximum Material Size:

8" x 8" x 16" (20.3 x 20.3 x 40.6 cm) block

Block must be rotated 180° to complete cutting through 8" (20.3 cm) depth.

Blade Guard Capacity:

Φ 12" (300 mm), Φ 14" (350 mm), Φ 16" (406 mm) with Arbor Φ 1" (25.4 mm)

Blade shaft RPM: 3100 RPM

Motor:

Voltage	115 V
Amperage	15.6 A
Frequency	60 Hz
RPM	3470 RPM

Masonry Types:

cinder block, slump stone block, wall brick, paver brick, concrete block and cylinders, roofing tile, marble, granite, decorative rock or almost any other nonferrous material.

NOTE: The machine is not designed to cut plastic or ferrous (metals) material.



Before starting up the machine, make sure that you read the Owner’s Manual and are familiar with its operation.



The working area must be completely clear, well lit and all safety hazards removed.



The operator must wear protective clothing appropriate to the work is doing.



Any persons not involved in the work should leave the area.



Use only blades with a maximum operating speed greater than the blade shaft’s RPM.

ASSEMBLIES

Follow the assembly instructions to prepare your machine for operation:

INSTALL WATER PUMP:

Install the Water Pump by plugging its electrical cord into the electric motor pigtail cord. Install the hose barb fitting onto the water pump, and then push on the hose. Route hose & electrical cord above the cross-brace of the water tray to avoid contact with the blade during operation and so that the splash curtain can be easily installed. Place the water pump in the bottom of the tray. Hook the top of the splash curtain, and place the bottom of the Splash curtain in the tray.



WARNING: Always make sure the saw is connected to a properly grounded electrical outlet. Failure to comply with this warning could result in serious bodily injury or death!



WARNING: DO NOT operate on low voltage! Low voltage causes loss of power, motor overheating, and possibly motor winding burnout. Voltage should be checked at the motor while it

is operating.

Good motor performance depends on proper voltage. Extension cords that are too long and / or too small reduce the voltage to a motor under load. Use extension cords NO SMALLER than the sizes indicated in the chart shown:

3 Checks Before Operating



Take into account the working conditions from a health and safety point of view. For start up refer to the engine or motor manual.

Make sure that the extension cord length is properly sized for the motor used on this saw. See the chart in Section 2 of this document.

4 Fitting The Blade

The blade rotates in a "down-cut" direction. This means that the front of the blade is moving downward while the rear of the blade is moving upward. Mount the Diamond Blade so that the arrow on the blade rotates in this "down-cut" direction. The Diamond Blade can be installed / removed by using the 3/4" end of the Wrench provided.



WARNING: Conventional "Wet" diamond blades **MUST** be used with water. **DO NOT** use conventional "Wet" diamond blades without water. Using conventional "wet" diamond blades without water can result in injury or death of the operator or persons in the work area!



WARNING: Use only Abrasive blades of a reinforced type.

Mount the Diamond Blade:

1. Using the Wrench provided (or one of your own) loosen the Cap screw by turning it Counter-clockwise.



CAUTION: Note that on Electric Models the Cap screw has **RIGHT HAND THREADS**. Installation of the wrong cap screw could damage the blade shaft!

2. Remove the outer Flange and make sure the outer Flange, the Inner Flange (Not Shown), and arbor shaft (Not Shown) are clean and not damaged.

3. Mount the Diamond Blade to the arbor and install the outer Flange. Install and tighten Cap screw by turning it in a Clockwise direction (Right Hand Thread). Use the Wrench to firmly tighten the Cap screw to the arbor shaft.

Operating Instructions

Choose the cutting blade for the type of operation - Wet or Dry. Note that the machine is assembled for wet operation.

Wet Configuration:

Fill the water into water tray and the level is within 1" (25 mm) of the top. Be sure the intake of water pump is fully immersed in water at all times. Keep the intake screen of these items clean and free of sludge, slurry, or other foreign material.

Dry Configuration:



WARNING: Conventional "Wet" diamond blades **MUST** be used with water. **DO NOT** use conventional "Wet" diamond blades without water. Using conventional "wet" diamond blades

without water can result in injury or death of the operator or persons in the work area!



WARNING: When cutting without water use only diamond blades that are intended to be used dry (without water). Conventional "Wet" diamond blades **MUST** be used with water.

Hint: To reduce vibration of the saw, the water reservoir pan can be filled with sand. Be sure to remove the Water Pump or the water pump intake Strainer to avoid contaminating it with dirt or sand.



WARNING: Always use respiratory protection when dry sawing.

Before cutting dry unplug the Water Pump from the electric motor by disconnecting the Electrical Cord.

CUTTING OPERATIONS:

Place material on movable cutting table and move it to the front of the machine, but do not let the blade contact the cutting table.

Cutting Methods: This unit allows two methods for the blade to contact the material:

1. Position the head to the desired height, then tighten the lock handle to make it fixed. Then push the material to the blade for cutting.
2. Hold the handgrip, lower the blade to the material for cutting. The blade will return to the upper position when force is released.

Start/Stop:

1. Open the Water Valve fully and check the water flow before cutting.
2. Start the electric motor by turning the Power Switch to the "ON" position.
3. Cut the material using one of the cutting methods described above.
4. Stop the electric motor by turning the Power Switch to the "OFF" position when finish cutting.



WARNING: Keep hands clear of rotating blade during operation. **READ ALL SAFETY WARNINGS** before operating this machine.



CAUTION: **DO NOT** cut into the cast aluminum area of the Conveyor Cart. The blade should only cut into the wooden insert area of Conveyor Cart!



STOPPING THE MACHINE: Stop the unit by turning the Power Switch to the OFF position.. Wait for all blade movement to stop before removing material from the machine.

Incidents During Operation

If the motor stops during sawing, check the follows:

1. Interruption to electrical connection: Check all electrical connections.
2. Manual overload switch has been tripped: Single phase, 60Hz motors are equipped with a manual overload reset button. If the motor stops because of an electrical overload and the overload reset button trips, turn the motor power switch to the OFF position. Let the motor cool down for 5 to 10 minutes, and then push the reset button. A click indicates that the motor is reset and ready for operation. Restart the motor by turning the power switch to the 'ON' position.

Maintenance



WARNING: Before performing any maintenance, **ALWAYS** locate the machine on a level surface with all the switch on the 'OFF' position, and make the power source disconnected. **CLEAN** the machine after each use.

DAILY CHECK:

Clean the water tray to remove sludge and slurry. This slurry is an abrasive cutting compound and will

shorten the life of the water pump and the diamond blade. Clean the water tray twice a day in heavy cutting. Then refill the water tray with clean water.

Clean the water tray to remove sludge from the machine at the end of each day. Flush clean water through the water pump and hoses.

Blade Alignment:

The blade shaft arbor on this machine is aligned at the factory so that a new blade will cut "squarely" with the material placed on the cutting table. If the machine or head platform assembly is dropped or damaged, the blade could become misaligned, so that it no longer cuts "squarely" through the material. If this occurs, the rails or roll wheels should be re-aligned so that the machine can produce "square" cuts. The cutting error should be within 1/16" (1.5 mm). Make sure the movable cutting table rolls freely glide along tracks. If the tracks are damaged, they must be repaired or replaced before the blade can be aligned. Lock the head platform assembly securely in a horizontal position.

*Note: Before starting to align the head platform, make sure the blade is flat and is **NOT** bent or damaged!*

Note: When aligning the blade to cut 'squarely', be sure to allow for the difference in thickness between the diamond segment and the center core of the blade!

V-BELT TENSION

Check V-Belt tension when machine is new and never set belt tension before. The machine is equipped with high tension V-Belts. That are properly tensioned at the factory, but they will stretch and become loose after a few hours of operation.

Tension Blade Shaft V-Belts:

1. Loosen the four cap screws that attach the motor.
2. Tighten the belt tensioning bolt at the rear of machine until the belt is tightened to the original factory tension.
3. Re-tighten the four cap screws that attach the motor.

Important Advice

1. Never transport the machine with the cutting head positioned on the frame. The movement can knock the head out of alignment.
2. When storing for an extended period of time, use a wire brush to remove hard, caked sludge. Thoroughly clean and lubricate moving parts, so the machine is ready for next operation.
3. Drive belts must be tight. When the belts are loose, power is lost. Replace worn belts without delay!
4. The blade must fit the arbor snugly, especially for diamond blades. Otherwise, pounding will occur and it will seriously damage the blades. If the arbor shoulder is grooved where the diamond blade has bound in the cut as the shaft has continued to rotate, the arbor must be replaced, or the blade life will be severely shortened.
5. The blade must be full diameter - minimum of 4" (100 mm). Replace worn flanges at once because undersized flanges will shorten blade life and cause blade breakage.
6. Check the condition of the movable cutting table on a regular basis. Replace wheels and the wooden strip frequently.
7. Be sure the cutting head is correctly aligned. Blade misalignment caused by handling damage, or transporting the machine with the cutting head on the frame can seriously affect blade life.
8. Replace worn bearings immediately! Worn bearings will quickly destroy the blade.
9. Flush clean water through the pump after each job will prolong the pump life.
10. Diamond blades may need to be 'sharpened' and efficiently 'dressed' with dressing sticks.



WARNING: *Never use fire brick to 'sharpen' or dress diamond blades!*

Abrasive blades must be a reinforced type. Never use an abrasive blade with water. These products can be damaged by operator abuse such as jamming the material into the blade. This can also be hazardous!

Repairs:

Repairs can be made in house or through an independent repair station. Upon your request, parts will be shipped out immediately from your local dealer or our warehouse in

For additional information, please contact your local dealer or dial our toll free customer service number:

Reference Information

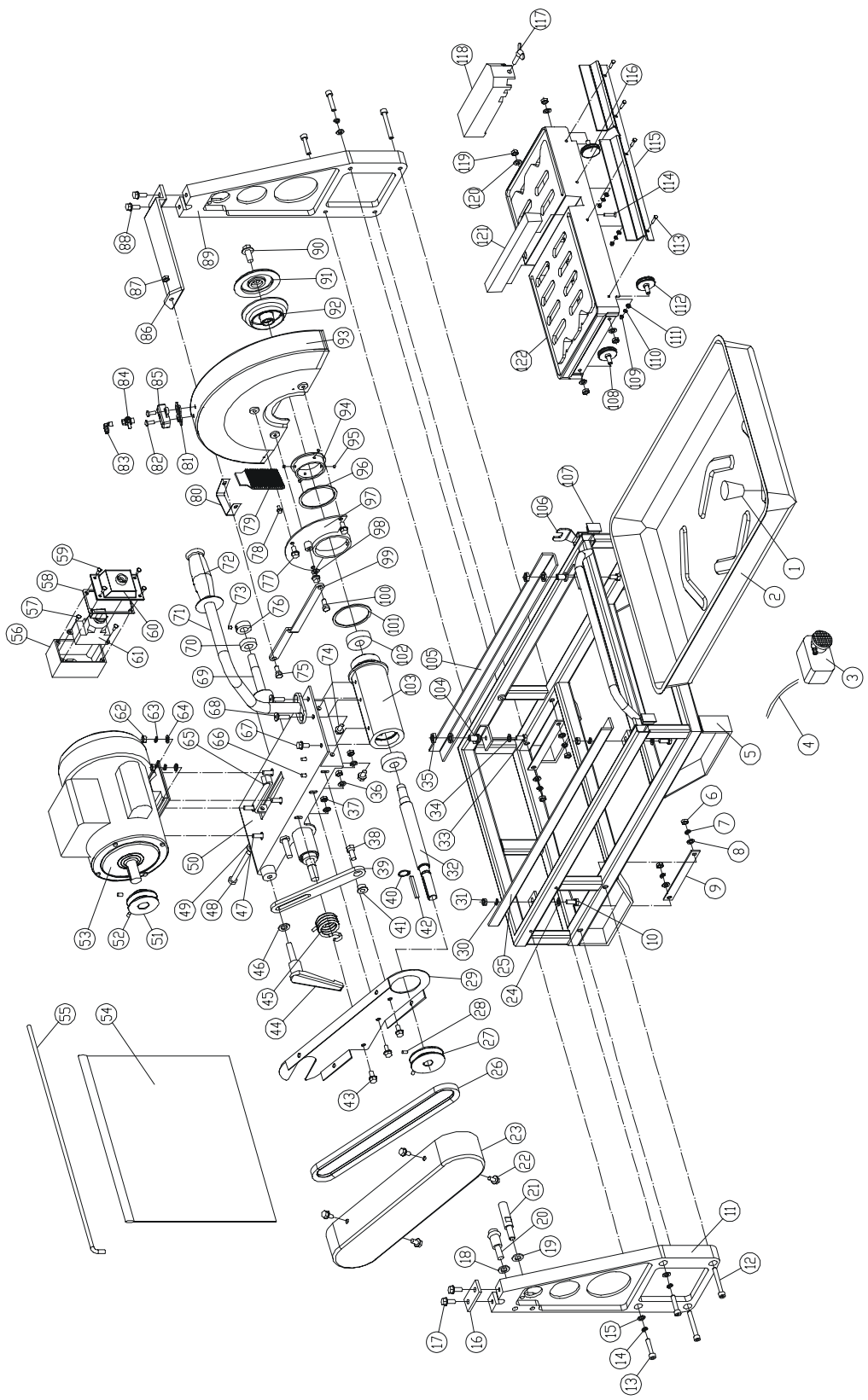
The instructions for use and spare parts found in this document are for information only and are not binding. According to our product quality improvement policy, we reserve the right to make technical modification without prior notice.

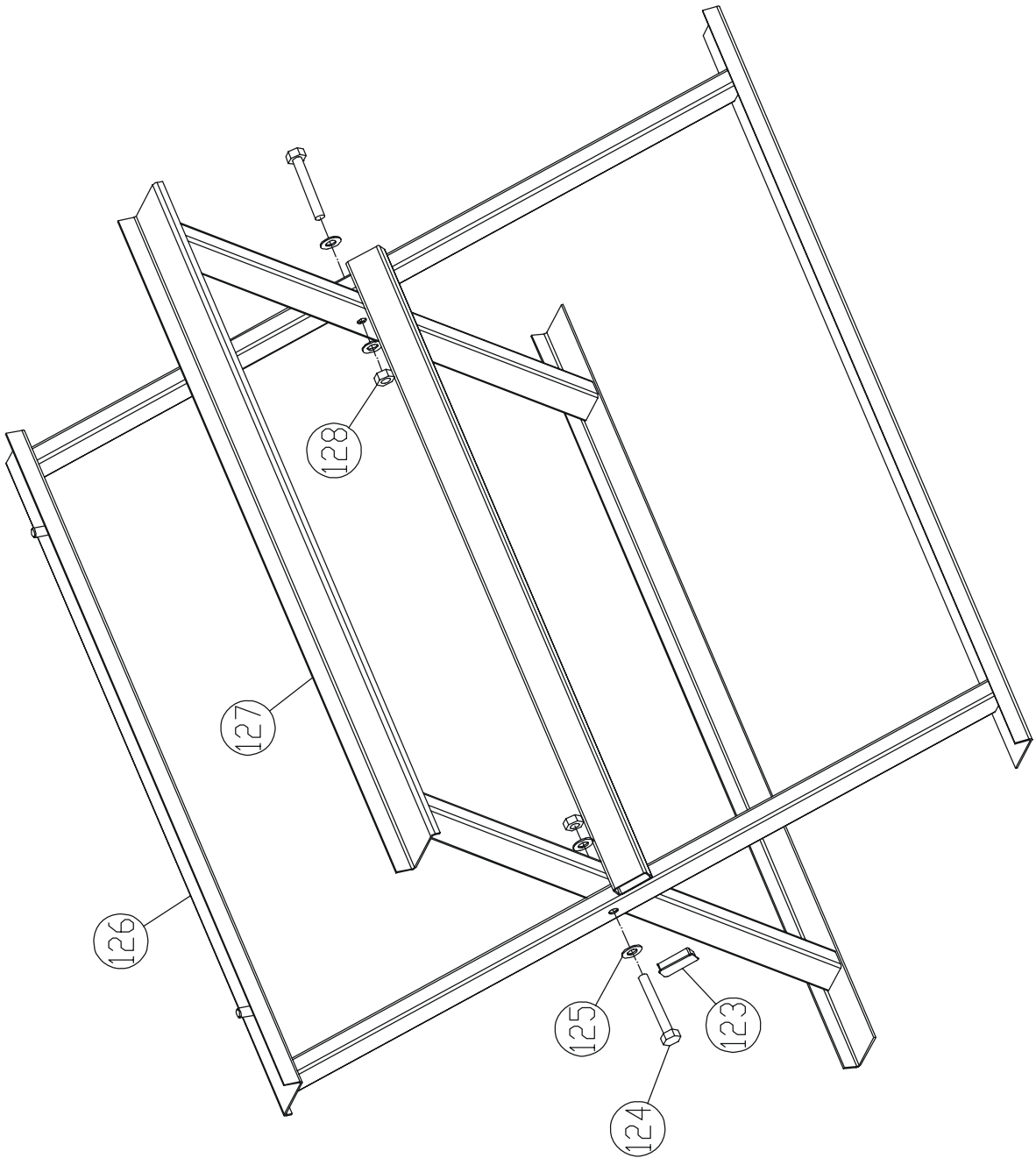
If you have any question related to its application, **DO NOT** use the machine. Please contact us at and we should like to suggest steps insuring excellent use for specific applications, functions or operation.

***NOTE:** The manufacturer is not responsible for any accident caused by unsuitable use or modifications.*

PACKING LIST

- | | |
|---|--|
| <input type="checkbox"/> Mainbody frame with Motor Unit | <input type="checkbox"/> Movable Cutting Table |
| <input type="checkbox"/> Adjustable Cutting Guide | <input type="checkbox"/> Water Pump |
| <input type="checkbox"/> Water Tray | <input type="checkbox"/> Rubber Drain Plug |
| <input type="checkbox"/> Water Tubing | <input type="checkbox"/> Folding Stand |
| <input type="checkbox"/> Wrench | |
| <input type="checkbox"/> Owner's Manual | |





No.	DESCRIPTION	QTY.	PART No.
-----	-------------	------	----------

1	rubber drain plug 15#	1	15075
2	water basin	1	11001
3	pump DG-108/115V	1	11161
4	hose $\Phi 8 \times 2$	1	11002
5	frame	1	11003
6	hexagonal nut M8	4	15073
7	split lock washer 8	4	15074
8	flat washer 8	4	15031
9	reinforce plate	2	11073
10	hex head cap screw M8 \times 20	2	15030
11	left post	1	11143
12	socket head screw M8 \times 65	4	11005
13	socket head screw M8 \times 40	4	11006
14	split lock washer 8	4	15074
15	flat washer 8	4	15031
16	pivot shaft retaining bracket	1	11010
17	flange bolt M8 \times 20	2	11011
18	flat washer 12	1	11008
19	flat washer 12	1	11008
20	spring retaining stud	1	11012
21	adjust bar	1	11009
22	flange bolt M8 \times 16	4	11116
23	belt guard outer	1	11146
24	flat washer 8	2	15031
25	left rail	1	11004
26	belt V AX 13 \times 880	1	11015
27	groove pulley	1	11145
28	socket head screw M6 \times 10	2	11122
29	inner belt guard bracket	1	11151
30	split lock washer 8	2	15074
31	hexagonal nut M8	2	15073
32	blade shaft	1	11027
33	hex head cap screw M8 \times 16	2	11114
34	flat washer 8	2	15031
35	tightening nut M12	2	15032
36	flat washer 8	3	15031
37	fiber locknut M8	3	15010
38	hex head cap screw M10 \times 20	1	11023
39	height adjustment bracket	1	11018
40	blade shaft ring 20	1	11127
41	bush	1	11072
42	square key C6 \times 45	1	11107
No.	DESCRIPTION	QTY.	PART No.

43	flange bolt M8×16	3	11116
44	lock handle M12×35	1	11160
45	torsion spring	1	11141
46	flat washer 12	1	11008
47	hex head cap screw M8×25	4	15083
48	hex head cap screw M10×100	1	11029
49	flat washer 10	1	15027
50	cutting head	1	11149
51	groove pulley $\phi 69 \times \phi 22$	1	11148
52	socket head screw M6×10	2	11122
53	motor 115V/50Hz 2.5HP	1	11147
54	rear curtain	1	11016
55	splash curtain rod	1	11014
56	switch housing	1	11152
57	Notch head screw M4×12	2	16007
58	switch housing gasket	1	11154
59	Notch head screw M4×12	4	16007
60	switch housing cover	1	11153
61	switch ZH-C5031210200	1	11162
62	hexagonal nut M8	4	15073
63	split lock washer 8	4	15074
64	flat washer 8	4	15031
65	motor adjustment strap	1	11144
66	notch head bolt M5×12	2	11159
67	flange bolt M8×16	1	11116
68	flat socket head cap screw M8×20	2	11121
69	pivot shaft	1	11037
70	bearing 6003ZZ	2	11038
71	stud	1	11052
72	handle grip	1	11051
73	socket head screw M6×10	2	11125
74	flange bolt M8×16	2	11116
75	hex head cap screw	1	11041
76	pivot shaft collar	2	11040
77	flange bolt M8×16	3	11116
78	flange bolt M5×10	2	11050
79	blade guard curtain	1	11140
80	water curtain bracket	1	11139
81	manifold gasket	1	11043
82	brass notch head screw M6×12	2	11126
83	hose fitting G1/4× $\Phi 8.5$	1	11046
84	hose fitting valve G1/4	1	11045
No.	DESCRIPTION	QTY.	PART No.

85	manifold	1	11044
86	stay-level bracket	1	11048
87	hexagonal nut M8	1	15073
88	flange bolt M8×20	2	11011
89	right post	1	11142
90	flange bolt M12×20-right	1	11158
91	outer flange	1	11057
92	inner flange	1	11056
93	blade guard	1	11157
94	bush	1	11087
95	notch head screw M5×6	4	11124
96	nylon washer	1	11088
97	blade guard linker	1	11089
98	flat washer 8	1	15031
99	adjust blade guard bar	1	11042
100	hex head cap screw	1	11041
101	nylon washer	1	11088
102	bearing 6304VV	2	11054
103	blade shaft housing	1	11150
104	threaded sleeve	2	14011
105	right guide bar	1	11062
106	wrench	1	11069
107	stopple 30×20	2	11131
108	socket head screw M8×30	2	11120
109	hexagonal nut M5	4	11119
110	split lock washer 5	4	11128
111	flat washer 5	4	11129
112	left roller wheel	2	15020
113	hex head cap screw M5×16	4	11110
114	wood screw 5×25	2	11068
115	ruler	1	11155
116	right roller wheel	2	11096
117	thumb screw M8×30	1	11067
118	rip guide	1	11094
119	fiber locknut M8	4	15010
120	flat washer 8	4	15031
121	table insert wood strip	1	11065
122	cutting table	1	11156
123	stopple 40×20	2	11132
124	hex head cap screw M10×65	2	11138
125	flat washer 10	6	15027
126	inner saw stand	1	11070
127	outer saw stand	1	11071
128	fiber locknut M10	2	15029